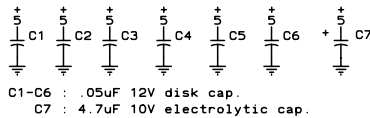


**NOTES:**

IC1 = 4050 HEX BUFFER  
 IC2 THRU IC11 = UCN5821A SHIFT REGISTER/DRIVER  
 (UCN5822A OR UCN5823A MAY BE USED)

THE 22/44 CONNECTORS MUST BE INSTALLED SO  
 THAT THEIR TABS "A" THRU "Z" ARE ON THE  
 COMPONENT SIDE OF THE PCB.

FOR SYSTEMS WITH TEN OR MORE BOARDS,  
 R1, R2 & R3 = 47K OHMS.



<b>AD</b> AUTOMATION DISPLAYS INC.		
		80 POINT DRIVER BOARD PCB #8171-80
D	DRAWN BY: TN/rpl	DWG. # 8171-80
DATE: 24 FEB 93		SHEET 1 OF 1