

H819A RELAY PCB FEATURES:

(8) Relays with 24 volt DC coils

Each relay contact rated at 0.6A @ 125 VAC, 2A @ 30 VDC

Contacts have common connection to isolated terminal.

Coils have common connection to +24 VDC.

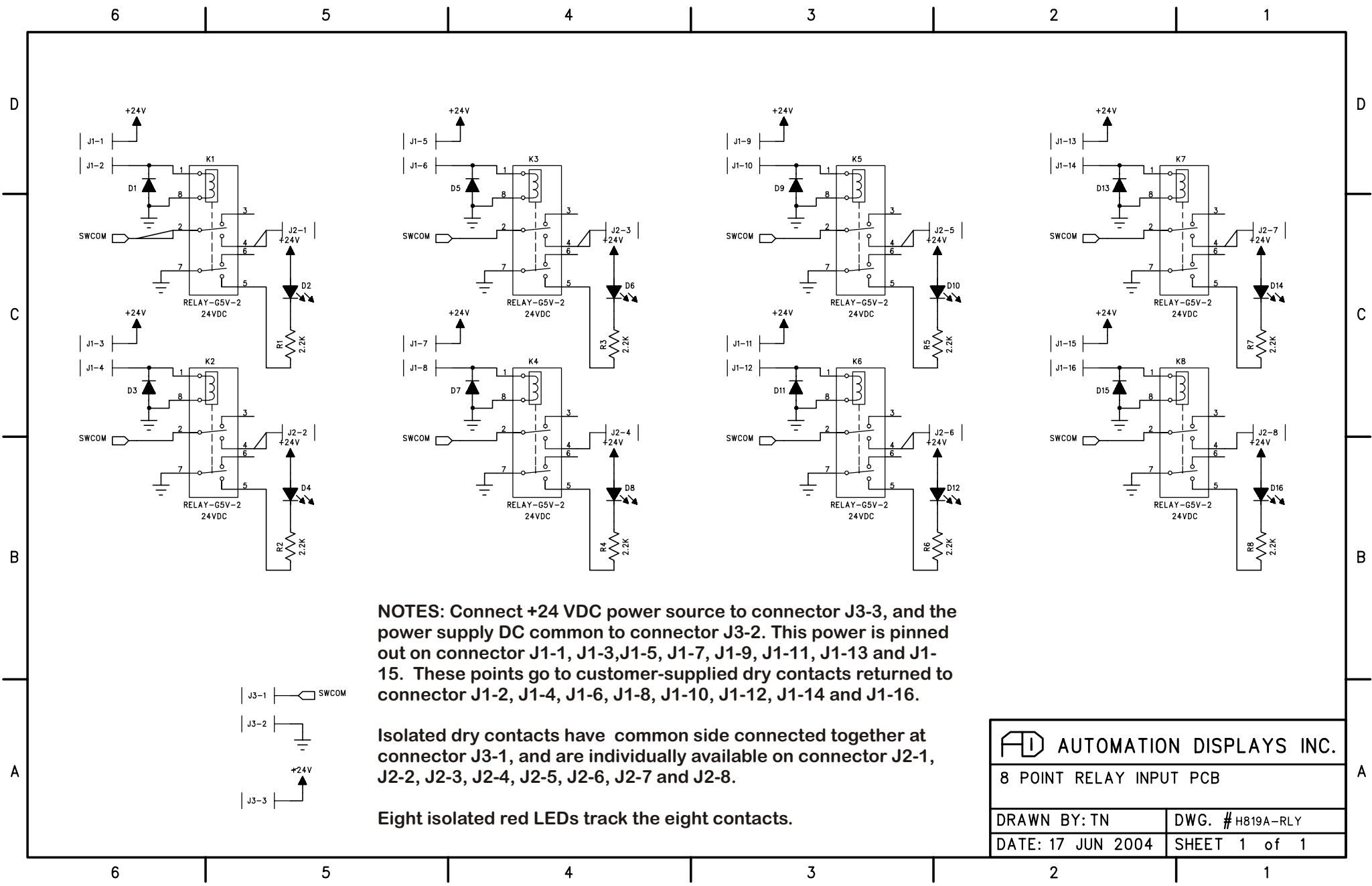
Coils are activated by low-true inputs.

(8) red LEDs indicate coil energization status of each relay

+24 VDC Operation

Removeable screw terminal connector block provided for customer's connection to relay contacts. Contacts are normally open and provided with a single common connection.

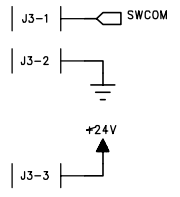
Size: 6.20" W x 3.25" D x 1.5" H (with 7/16" board mounting standoffs)




NOTES: Connect +24 VDC power source to connector J3-3, and the power supply DC common to connector J3-2. This power is pinned out on connector J1-1, J1-3, J1-5, J1-7, J1-9, J1-11, J1-13 and J1-15. These points go to customer-supplied dry contacts returned to connector J1-2, J1-4, J1-6, J1-8, J1-10, J1-12, J1-14 and J1-16.

Isolated dry contacts have common side connected together at connector J3-1, and are individually available on connector J2-1, J2-2, J2-3, J2-4, J2-5, J2-6, J2-7 and J2-8.

Eight isolated red LEDs track the eight contacts.



 AUTOMATION DISPLAYS INC.	
8 POINT RELAY INPUT PCB	
DRAWN BY: TN	DWG. # H819A-RLY
DATE: 17 JUN 2004	SHEET 1 of 1