



AFD-J234 MESSAGE DISPLAY ANNUNCIATOR FEATURES:

(10) INPUTS

Customer provides dry contact inputs to annunciator screw terminals
Ten input terminals plus one common terminal are provided.

(3) Screw terminals for connection to 110 VAC, 60 Hz power.

Backlit LCD display provides two lines of sixteen characters each.

Size: 10.5" W x 6.25" H x 3.25" D

Material: 14 GA cold rolled steel

Finish: Textured black powdercoat

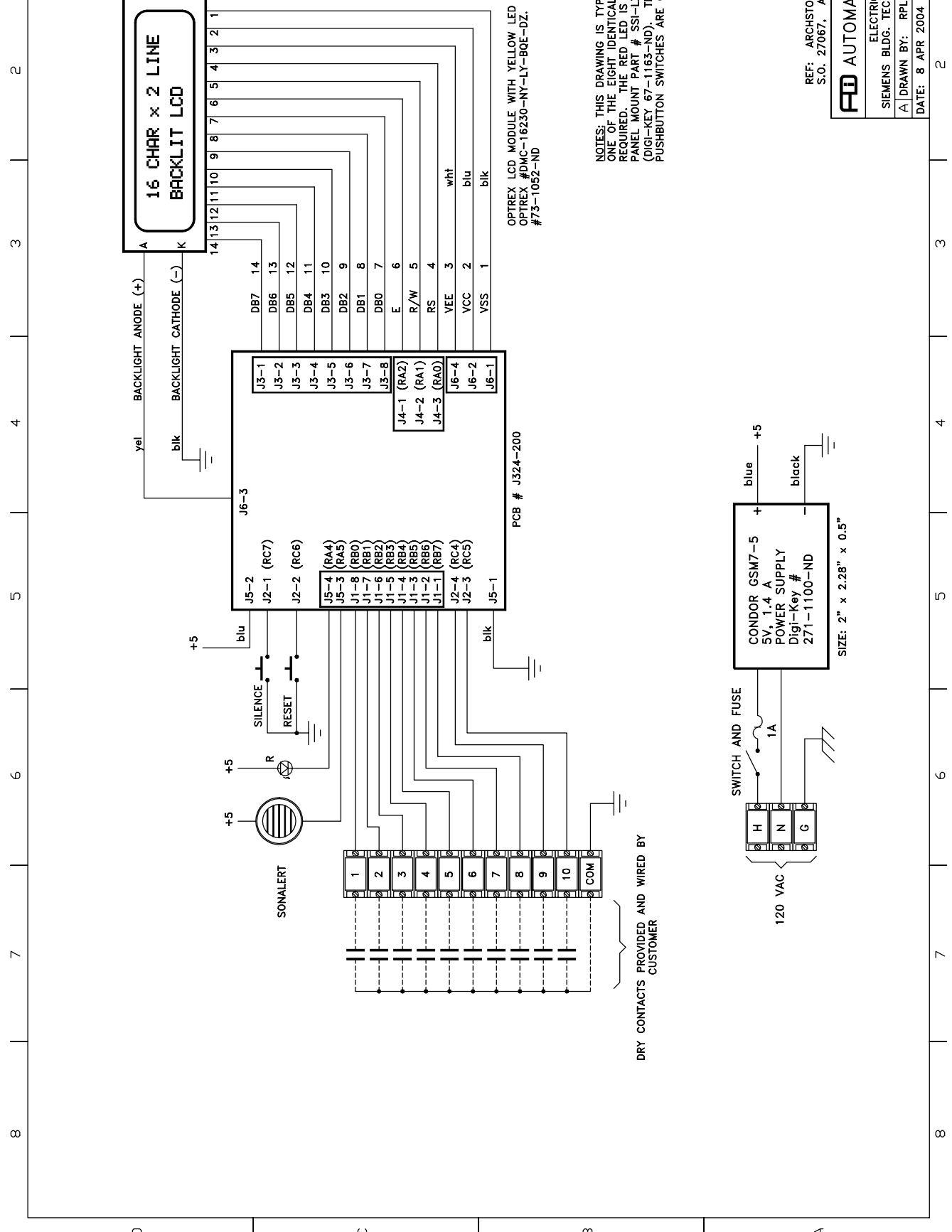
ANNUNCIATOR SEQUENCE:

NO INPUTS TRUE: LED off, sonalert off, "no alarms" displayed on LCD.

NEW INPUT TRUE: LED flash, sonalert on, message for input displayed on LCD. First input blocks subsequent messages until reset switch is pressed.

SILENCE SWITCH PRESS: Sonalert off, LED steady on, first input message displayed on LCD.

RESET SWITCH PRESS: Messages go into rotation, messages no longer true are dropped. Sonalert off. If no inputs are true, the the LED is off. If one or more messages are true, then the LED is steady on until all inputs are false, then the LED turns off.



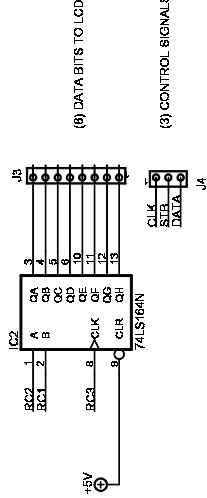
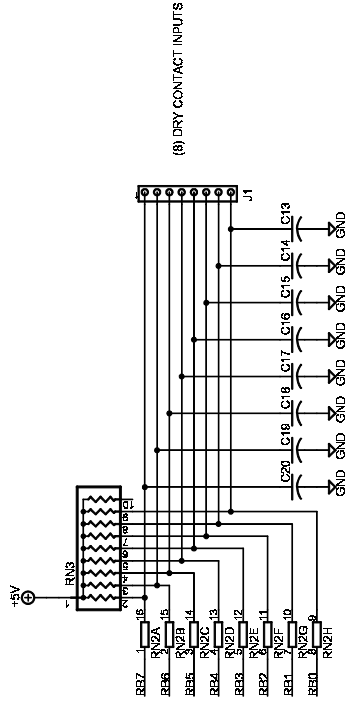
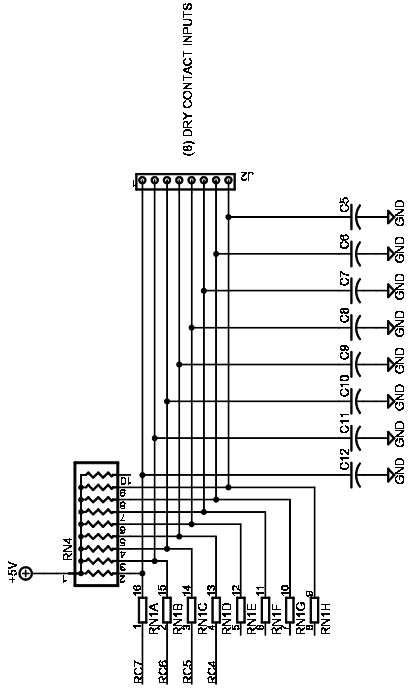
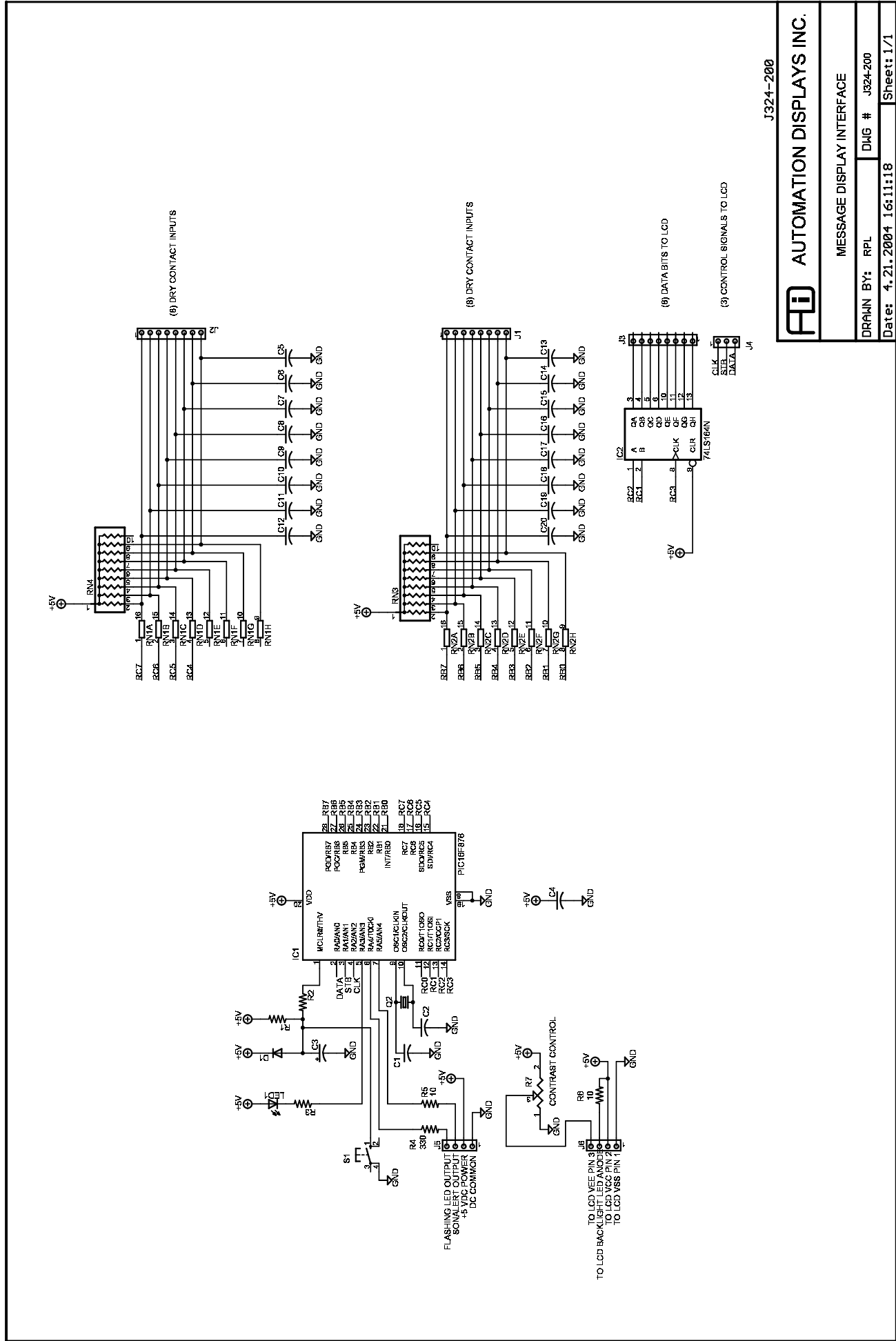
OPTREX LCD MODULE WITH YELLOW LED BACKLIGHTING.
 OPTREX #DMC-16230-NY-LY-BOE-DZ. DIGI-KEY
 #73-1052-ND

NOTES: THIS DRAWING IS TYPICAL FOR EACH
 ONE OF THE EIGHT IDENTICAL UNITS
 REQUIRED. THE RED LED IS A LUMEX 5mm
 PANEL MOUNT PART # SSI-LXR4815ID
 (DIGI-KEY 67-1163-ND). THE TWO
 PUSHBUTTON SWITCHES ARE OTTO P1-32118.

DRY CONTACTS PROVIDED AND WIRED BY
 CUSTOMER

REF: ARCHSTONE BMS MESSAGE DISPLAYS
 S.O. 27067, AFD-J324A

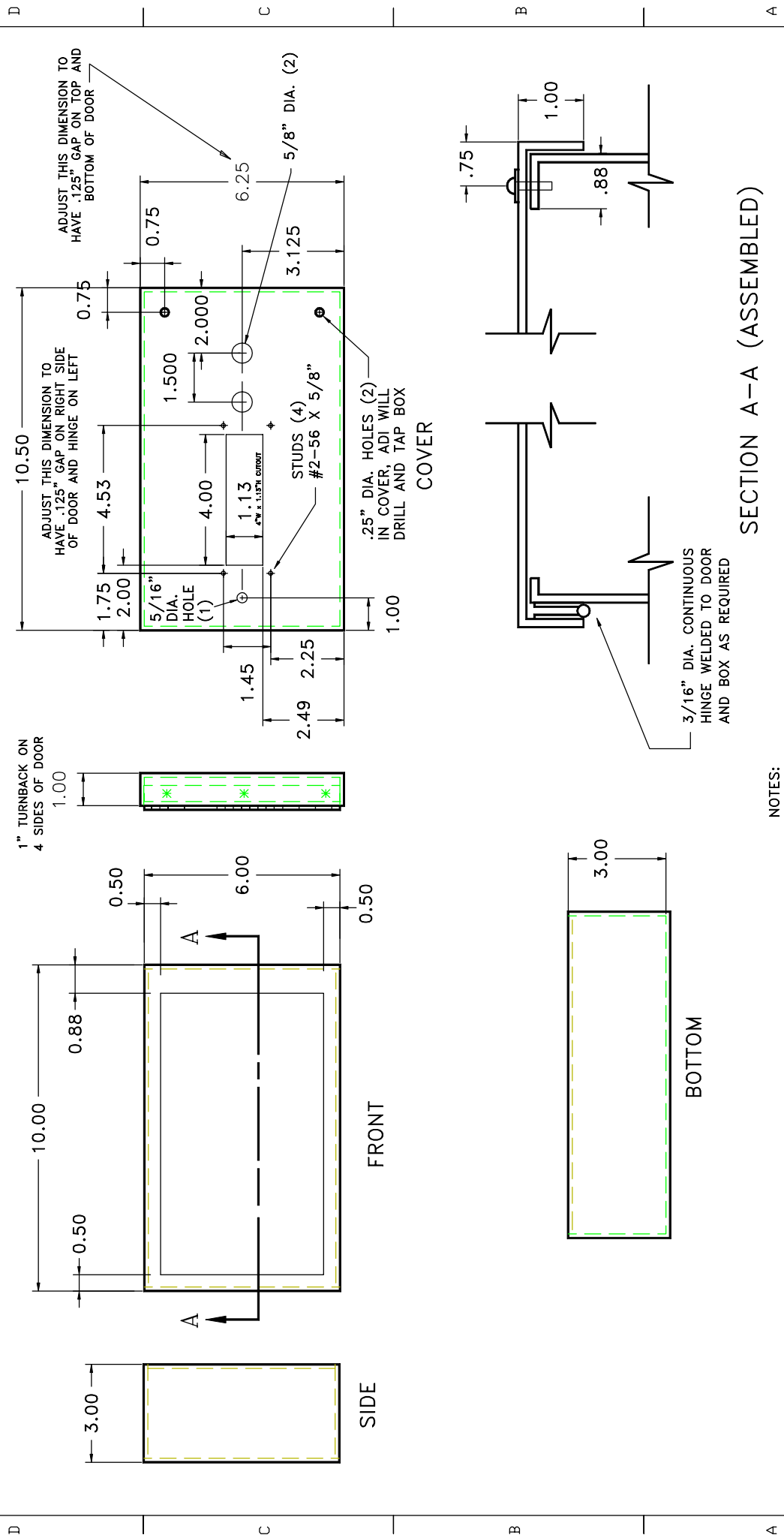
AD AUTOMATION DISPLAYS INC.	
ELECTRICAL BLOCK DIAGRAM	
SIEMENS BLDG. TECH - CANNED MESSAGE DISPLAYS	
A	DRAWN BY: RPL
	DWG # J324-300
	DATE: 8 APR 2004
	SHEET 1 OF 1



J324-200

AFD AUTOMATION DISPLAYS INC.
 MESSAGE DISPLAY INTERFACE
 DRAWN BY: RPL DWG # J324-200
 Date: 4.21.2004 16:11:18 Sheet: 1/1

1 2 3 4 5 6 7 8



- NOTES:
1. MATERIAL - 14 GA. CRS
 2. FINISH - BAKED AND TEXTURED BLACK ENAMEL
 3. CONSTRUCTION: COVER IS WELDED AND GROUND SMOOTH BOX IS FOLDED AND TACK WELDED

SECTION A-A (ASSEMBLED)

AD AUTOMATION DISPLAYS INC.	
ARCHSTONE BMS MESSAGE DISPLAYS	
D	WALL ENCLOSURE
DATE	REV. NO.
20 APR 2004	J324-100

1 2 3 4 5 6 7 8